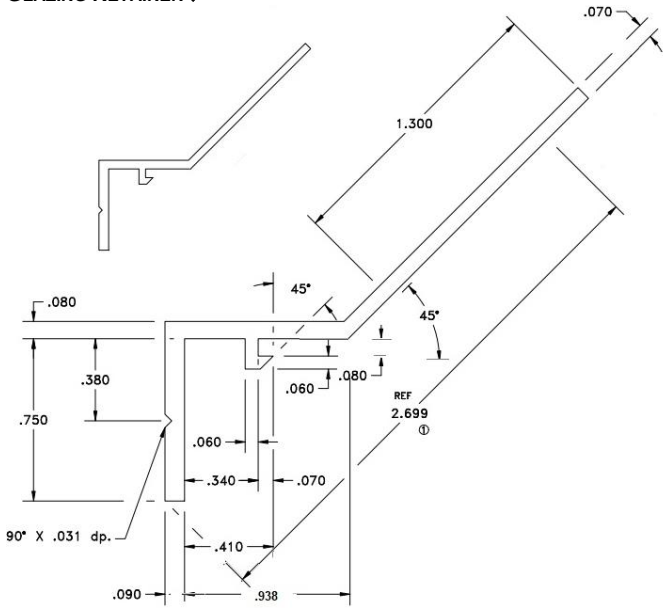


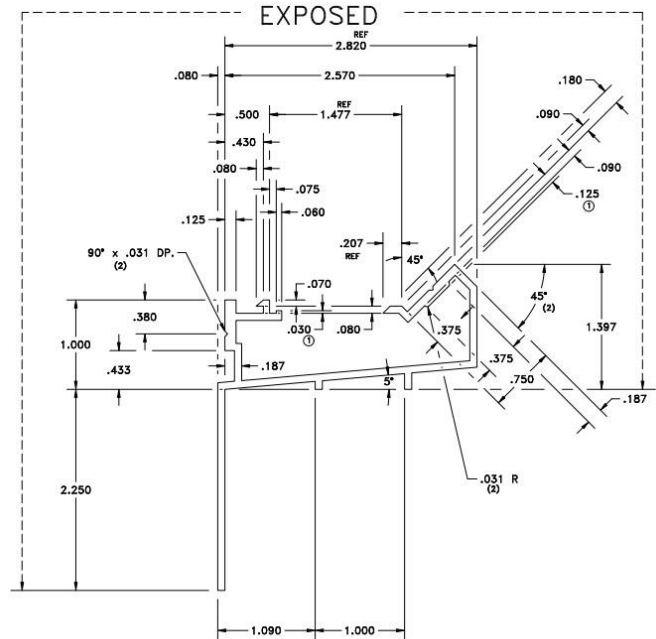


GABLE END RIDGE SKYLIGHTS

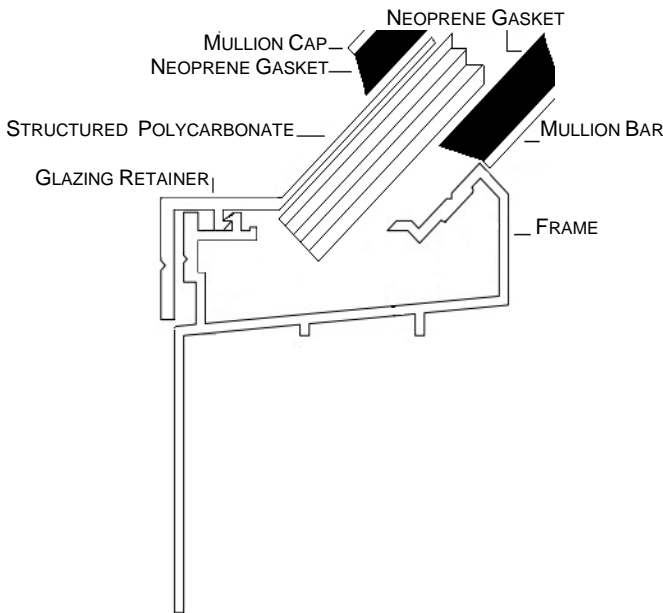
GLAZING RETAINER↓



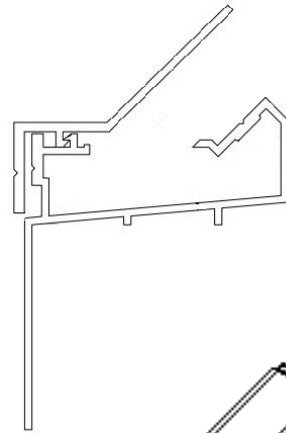
FRAME↓



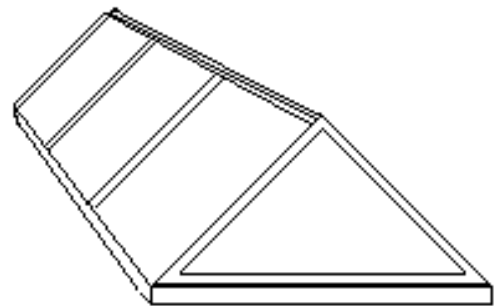
GLAZING RETAINER WITH FRAME, GLAZING AND MULLIONS↓



←GLAZING RETAINER & FRAME WITHOUT GLAZING OR MULLIONS



COMPLETE SKYLIGHT↓



Some of the spaces on the drawings are only to show different components and will not have spaces between them when fully assembled. (Example:: gasket and glazing will not have a space between them.)

SPECIFICATIONS:: Gable-end ridge (GER) skylights as manufactured by LBK Skylight Manufacturing [(800) 390-2301] shall be factory assembled with one of the following options:: ACRYLIC--2412 bronze over clear or 2447 white over clear acrylic in either 0.118" over 0.118" (standard duty), 0.187" over 0.118" (commercial duty) or 0.177" 100%DR Impact Modified Acrylic over 0.177" acrylic. POLYCARBONATE--2412 bronze over clear or 2447 white over clear over either polycarbonate over acrylic or polycarbonate over acrylic (all 0.118"). STRUCTURED POLYCARBONATE--8-32mm in either bronze, opal (white) or clear. INSULATED GLASS--1.125" Overall thickness which is tempered, loE coated outboard glass, argon-filled air space and laminated inboard glass. Aluminum frame and retainer are 6063 T5 extruded aluminum with welded corners. Finish shall be mill (natural aluminum), bronze or custom color. Skylight is designed and manufactured to meet or exceed standard of 40 psf live load and 20psf (uplift). Please refer to our long specification for all glazing details. ALL UNITS ARE GUARANTEED AGAINST DEFECTIVE WORKMANSHIP AND MATERIAL.